

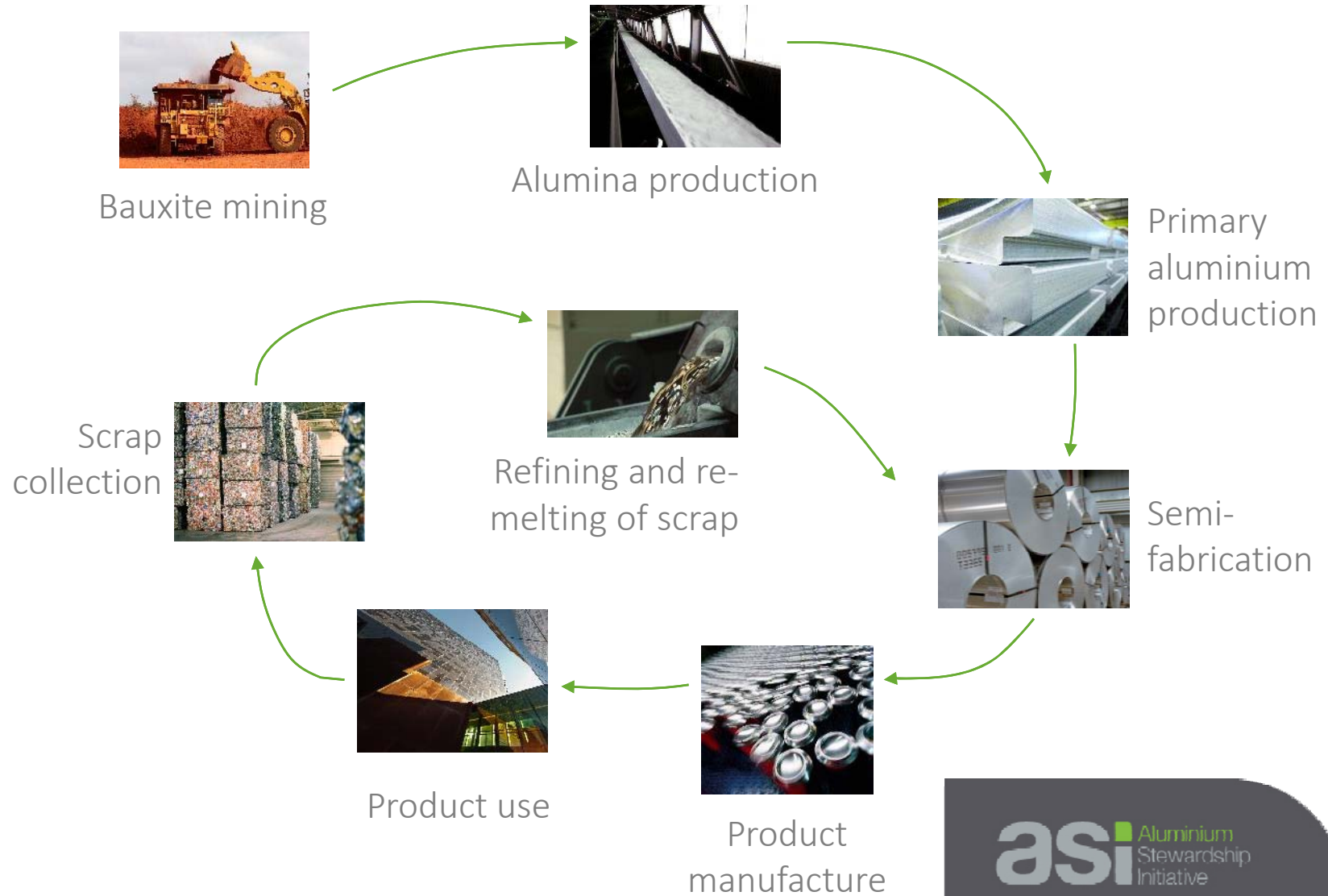
# Aluminium Stewardship Initiative

A multi-stakeholder approach to responsible sourcing

Dr Fiona Solomon, ASI Executive Director  
International Raw Materials Conference, Berlin  
11 November 2015

# The aluminium value chain

Images © Rio Tinto, Hydro, Novelis and Rexam



# ASI – a brief history

---

- 2009 Multi-stakeholder group on ‘responsible aluminium’
- 2010 Report from Track Record recommending third-party certification system
- 2011 Agreement to develop ASI work program
- 2012 IUCN appointed as co-ordinator for initial ASI standards-setting process
- 2014 ASI Performance Standard launched
- 2015 ASI Executive Director appointed and ASI incorporated  
Work underway to develop a functioning independent third party certification program



© Rio Tinto

# ASI members and participants

---

## Producers

- Aleris
- Constellium
- Hydro
- Novelis
- Rio Tinto Alcan

## Packaging

- Ball Corporation
- Coca-Cola Enterprises
- Constantia Flexibles
- Nestlé Nespresso SA
- Rexam
- Tetra Pak

## Automotive

- Audi
- BMW Group
- Jaguar Land Rover

## Construction

- Council for Aluminium in Building
- Schüco

## Civil Society and Others

- IUCN
- IGORA Cooperative for Aluminium Recycling
- Regain Materials

## Stakeholders in Standards Setting Group:

### Civil Society

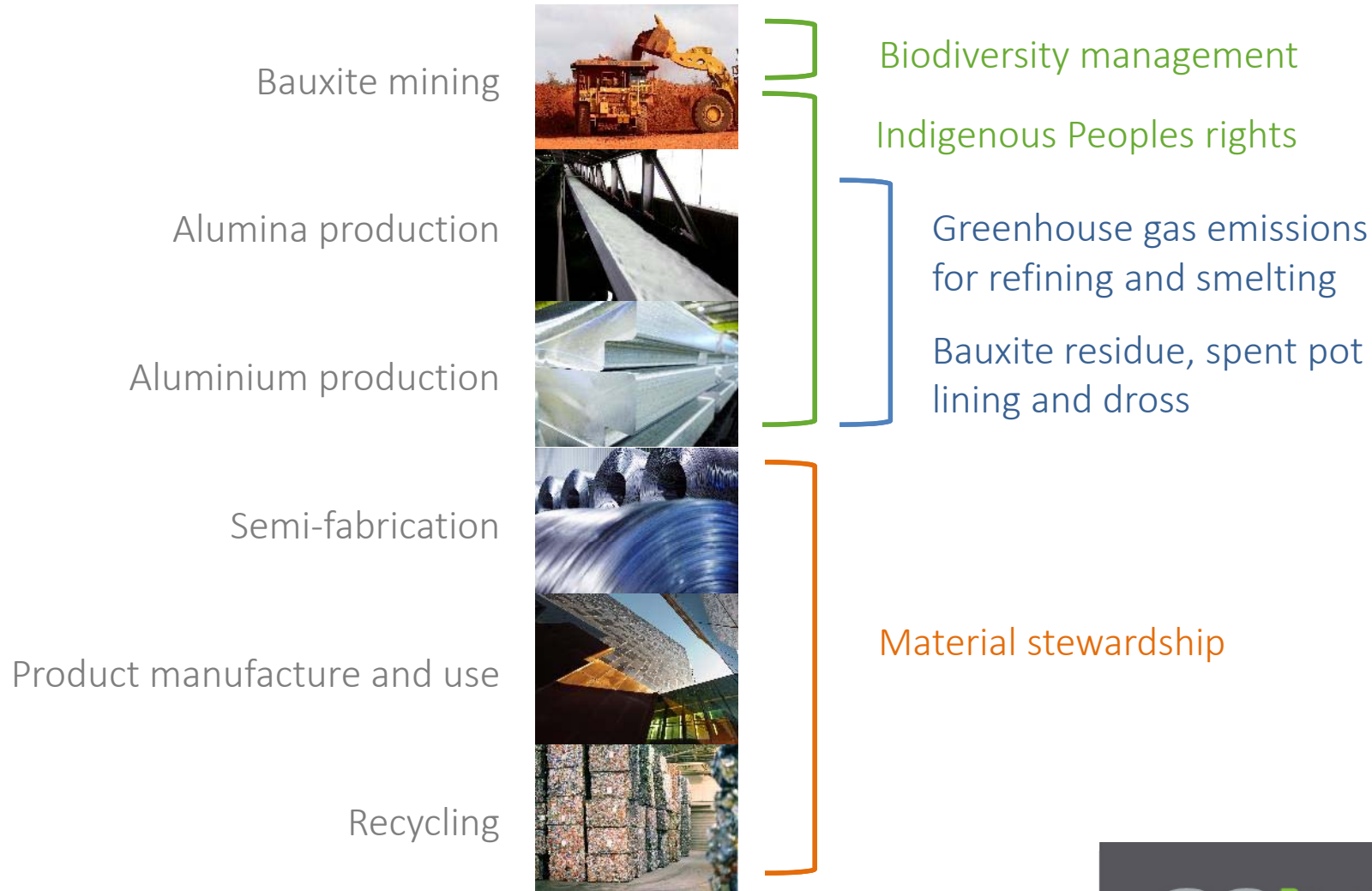
- As You Sow
- Fauna Flora International
- Forest Peoples Programme
- International Alliance of Indigenous and Tribal Peoples of the Tropical Forests / Foundation of Indigenous Knowledge Promotion, Panama
- IndustriALL Global Union
- IUCN
- Transformando Conflictos Partners El Salvador
- Transparency International
- WWF

### Other experts:

- CII - Godrej Green Business Centre, India
- Cleaner Production Centre South Africa
- Ecofys
- EMPA – Materials Science and Technology
- IGORA Cooperative for Aluminium Recycling



# Priority issues for ASI standards



Images © Rio Tinto and Novelis

# ISEAL Alliance and assurance – an evolving vision

---

Patrick Mallet, ISEAL Technical Director, February 2015:

*“[In future] certification is less about the audit and more about pulling together data from multiple sources to better understand the risks to sustainable practice at an enterprise level,*

*then using that information to focus capacity building interventions and compliance assessments in the areas that matter most.”*

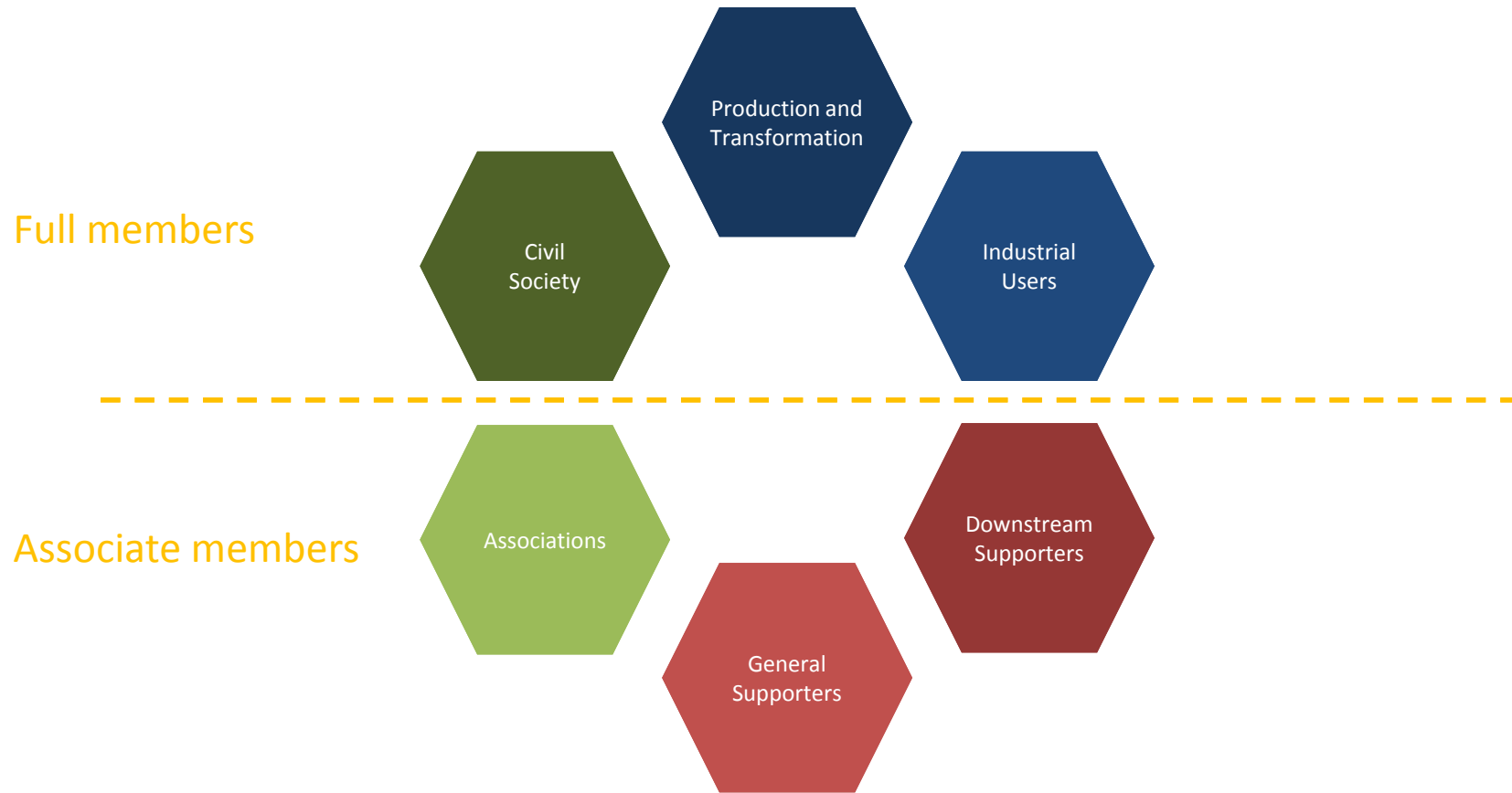
# Assurance model – design approach

---

1. Costs of certification need to be minimised to ensure ASI is accessible through the value chain.
2. Third-party assurance is central, with company self-assessment as a foundation for this framework.
3. A risk-based or materiality approach to auditing and sampling evidence is essential for efficiency and can tie to desired impacts.
4. Harmonisation and cross-recognition of parallel standards and systems of controls will reduce unnecessary duplication in ASI assessments.
5. Online management of assessment data will reduce direct and indirect costs of the assurance process and can enable a tailored materiality approach.

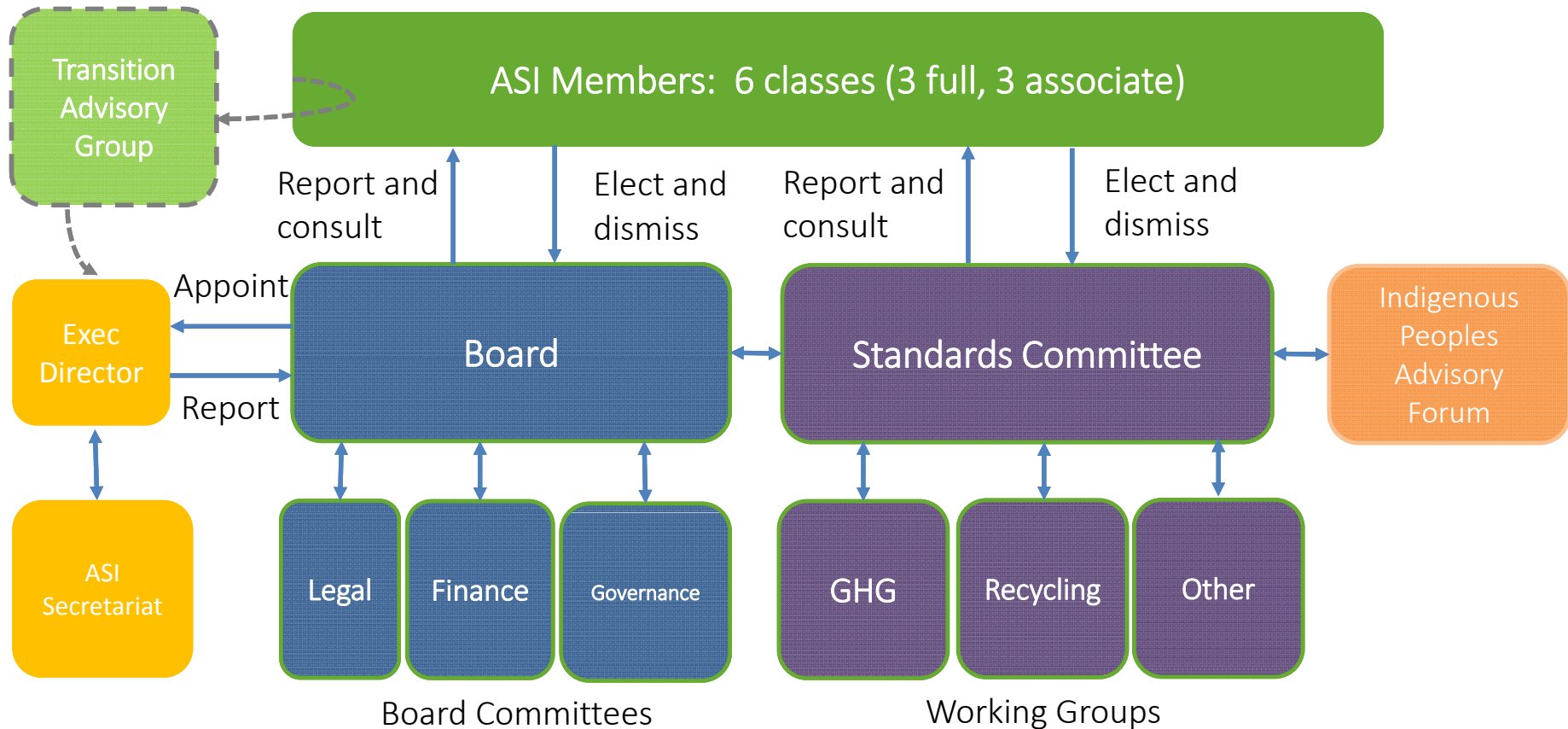
# ASI Membership classes – full and associate

---





# Proposed ASI governance model



# Key milestones to ASI certification platform

---

## 2015 – General frameworks

- Develop governance and business model
- Develop proposed assurance model
- Further work on CoC standard
- Stakeholder outreach

## 2016 – Implementation model

- Develop online assessment platform
- Develop monitoring and evaluation framework
- Broad stakeholder consultation on CoC standard
- Implement auditor accreditation process
- Pilot testing of standards and assurance model
- Enhanced China engagement

## 2017 – Operation

- Finalisation of all normative documents
- Mid-late 2017: ASI Certification begins operation

# Benefits of participating in ASI

---

- Be part of a constructive multi-stakeholder dialogue about maximising the contribution of aluminium to a sustainable society
- Contribute to the development of a credible third-party certification program for the aluminium value chain
- Shape the development of practical tools and resources that support implementation
- Support ASI's mission to recognise and collaboratively responsible production, sourcing and stewardship of aluminium

©Norsk Hydro



**asi** Aluminium  
Stewardship  
Initiative

# More information

---

Dr Fiona Solomon  
ASI Executive Director  
[fiona@aluminium-stewardship.org](mailto:fiona@aluminium-stewardship.org)

Website:  
[www.aluminium-stewardship.org](http://www.aluminium-stewardship.org)

Join the ASI mailing list:  
<http://aluminium-stewardship.org/mailing-list/>

©Norsk Hydro



**asi** Aluminium  
Stewardship  
Initiative