

Authors: Carole Holway (CGG NPA Satellite Mapping), Corinna Wolf (BGR)
Date: 16th January 2014



A Geohazard Information Service for Urban Areas: PanGeo

The PanGeo service is aimed at those with an interest in the stability of the ground specifically in urban areas. It is of particular interest to Local Authorities, planners, national geological surveys, policy-makers and also the general public.

The PanGeo Service was borne out of an EU funded 3 year project, in support of the EU's Copernicus programme. The PanGeo partners comprise of 27 national Geological Surveys of the EU, together with 10 pan-European specialist organization's, who collaborated to create the unique geohazard data product for 52 towns across Europe, covering approximately 13% of the EU population.

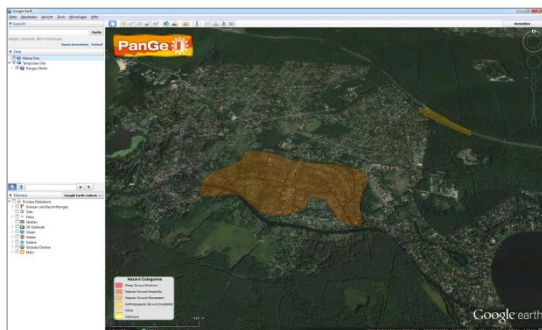
It is an online service that provides users with open access to geohazard information across European towns and cities down to a mapping scale of 1:10,000. Information on these towns can be viewed through the PanGeo website and portal www.pangeoproject.eu.

Geohazards features that can be viewed in PanGeo include earthquakes, landslides, mineral workings, groundwater abstraction and recharge, shrink and swell clays, soluble rocks, compressible ground, collapsible deposits, landfill and rockfall. Many of these geohazards manifest as subsidence.

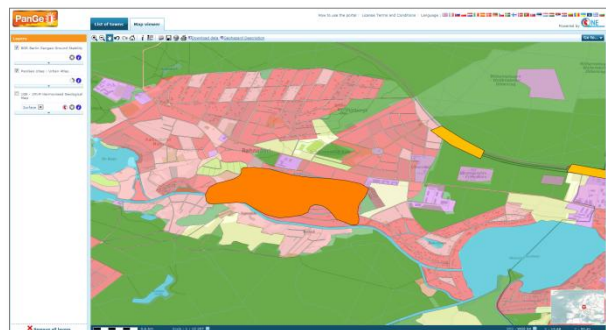
The geohazard information within each city is presented in a standard format compliant with European regulations, therefore providing consistent results, and is created through the state-of-the-art InSAR (ground and structure motion) surveying services derived from satellite radar data together with geological and geohazard information. The product (which consists of a Geohazard Stability Layer (GSL) and a Geohazard Description (GHD)) can be visualized either through a portal or Google Earth™ or it can be downloaded and integrated into a user's own system.

PanGeo leads to improved knowledge of geohazard information, thereby allowing more informed decision making in planning and development which can lead to cost savings in urban areas and the creation of a safer environment. Also, EU citizens will be empowered with open access to knowledge previously known only to a few.

At present the PanGeo service is available for two major cities, Berlin and Hanover in Germany. The aim of PanGeo is to increase the coverage throughout Europe and beyond to incorporate further towns and cities. On the PanGeo home page, there is an opportunity to contact the project management to discuss new towns and cities being brought into PanGeo.



Screenshot of Berlin PanGeo GSL visualized in Google Earth™



Screenshot of Berlin PanGeo Portal together with Urban Atlas cover

For more information contact the project coordinator: Claire Roberts (claire.roberts@cgg.com).

