

International co-operation between groundwater and surface waters professionals



Tomasz Nałęcz, Polish Hydrogeological Survey

Tomasz.Nalecz@pgi.gov.pl

Outline

1. Introduction
2. Co-operation
3. Institutions cycle
4. International Transboundary Commissions
5. Seminars and Projects
6. Database
7. Summary



INTRODUCTION

- WATER FRAMEWORK DIRECTIVE (2000/60/WE)
- GROUNDWATER DIRECTIVE (80/86/WE)
- WATER ACT
- ENVIRONMENT PROTECTION ACT

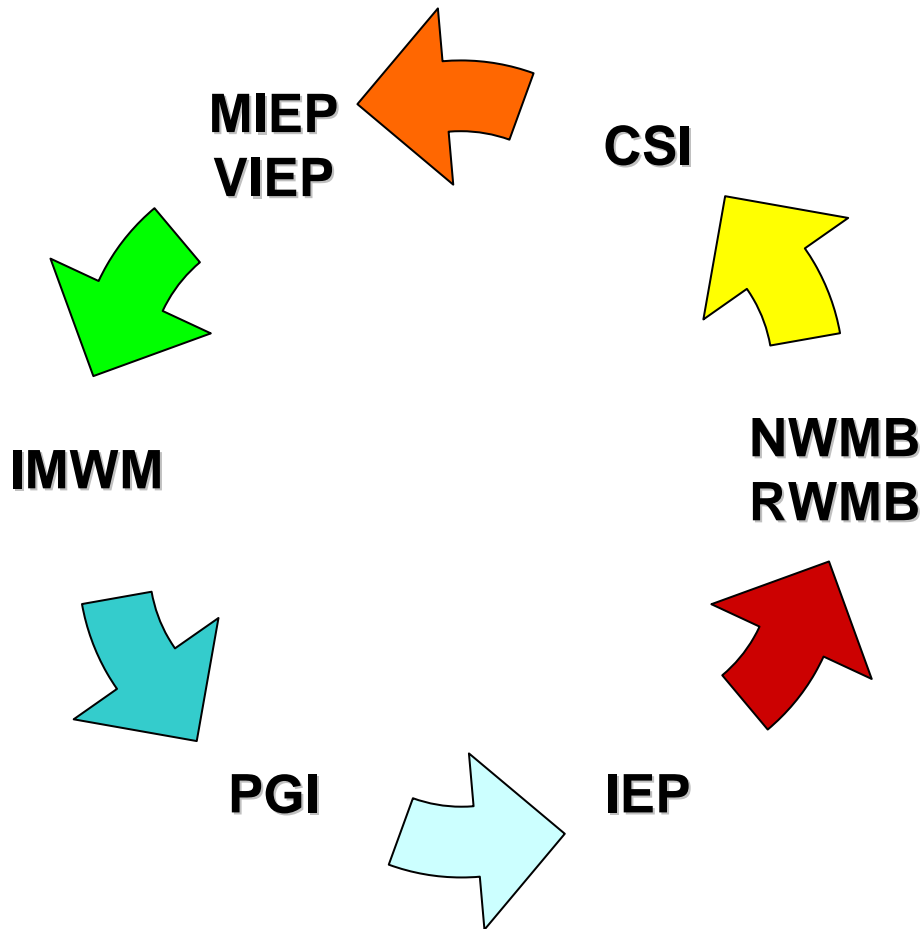


CO-OPERATION

- One goal to protect environment –water resources
- One medium – water
- One solution – integrated approach
- To consider groundwater resources to solve water management problems
- Partners for co-operation



WATER MANAGEMENT INSTITUTION CYCLE



PGI – Polish Geological Institute
IMWM – Institute of Meteorology and Water Management
IEP – Institute of Environmental Protection

NWMB - National Water Management Board
RWMB - Regional Water Management Board

MIEP – Main Inspectorate for Environment Protection
VIEP – Voivodship Inspectorate for Environment Protection

CSI - Chief Sanitary Inspectorate

SEMINARS

Groundwater Modeling – Water Framework Directive

Karłów, POLAND – June 2006

Organised by: PGI and European Commission DG Enlargement

International team of experts

Addressed to:

Regional Water Management Boards

Voivodship Inspectorates for Environment Protection

Actions:

Theoretical background

Case study – international and local

SEMINARS

Groundwater Modeling – Water Framework Directive

Karłów, POLAND – June 2006

Main goals:

Capabilities of hydrogeological modeling

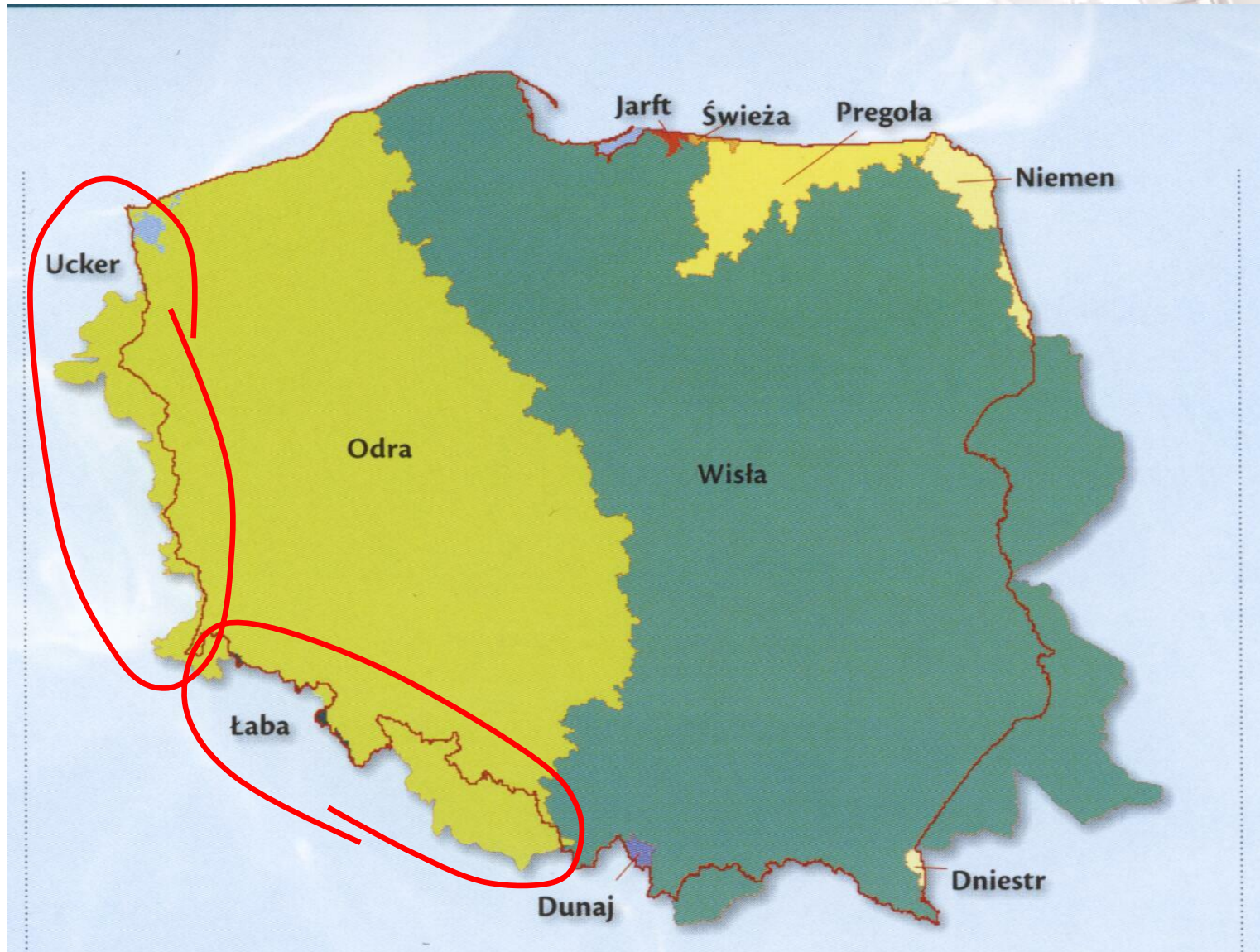
Tool for preparation of Water Management Plans in River Basin

Assessment of expert team projects

Closer cooperation



RIVER BASINS



TRANSBOUNDARY WATER COMMISSION

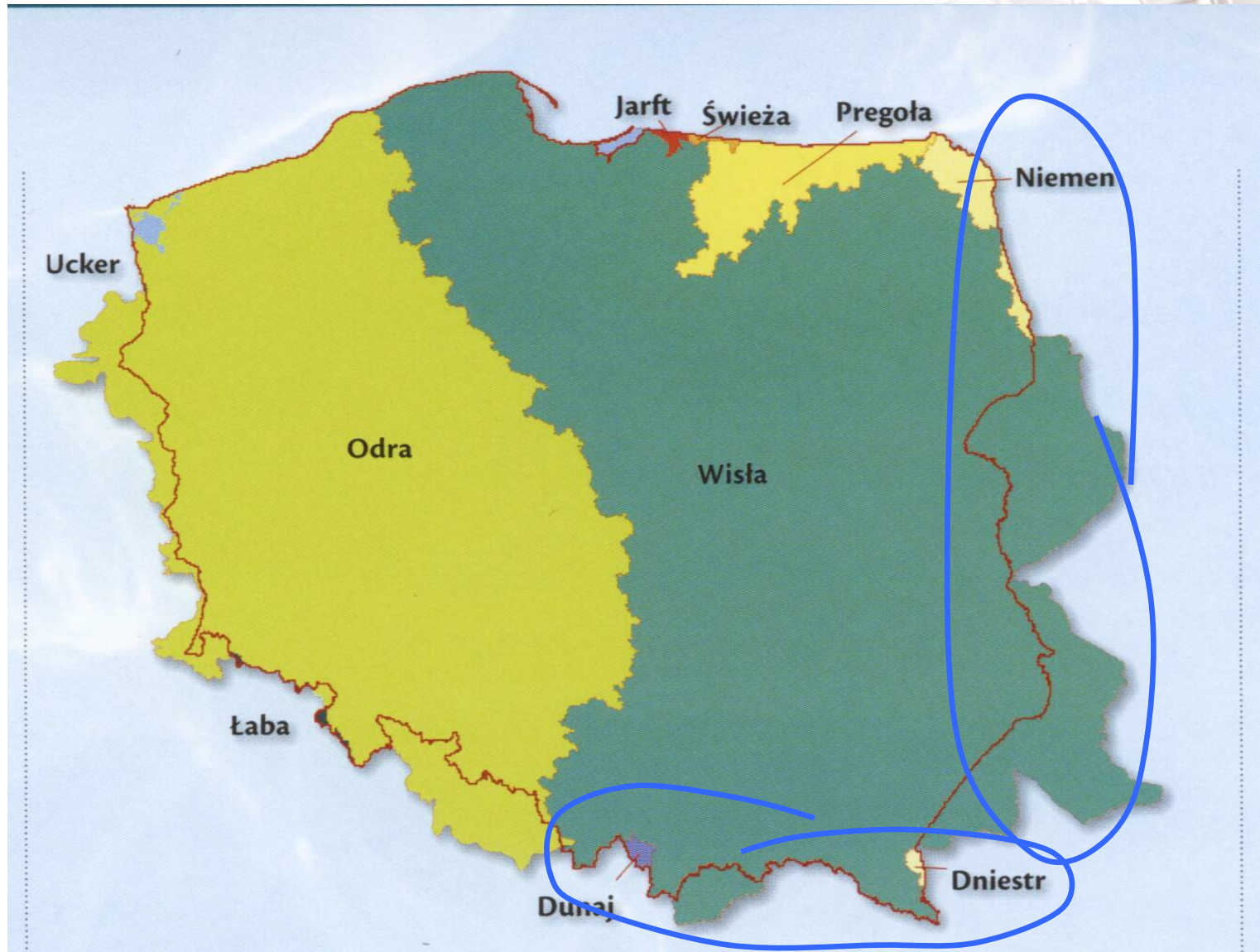


International Commission for the Protection of the Odra River against Pollution

International Commission for the Protection of the Danube River

International Commission for the Protection of the Elbe River

RIVER BASINS



TRANSBOUNDARY WATER COMMISSION

Polish – Ukrainian Transboundary Water Commission

Polish – Slovakian Transboundary Water Commission

NEW PROJECTS

***Sustainable use and protection of groundwater resources –
Poland – Ukraine transboundary monitoring and water management
system***

NATO Pilot Project Workshop – August 2006



NEW PROJECTS

INTERREG IIIA / TACIS CBC

Training in groundwater WFD monitoring for building transboundary network in Poland – Ukraine border area

GLOBAL ENVIRONMENT FUND

Sustainable Use of the Mesozoic Transboundary Aquifer
Poland-Belarus-Ukraine

EU 7 Framework Programme

GWB Characteristics

Identify Results

Layers: <Top-most layer>

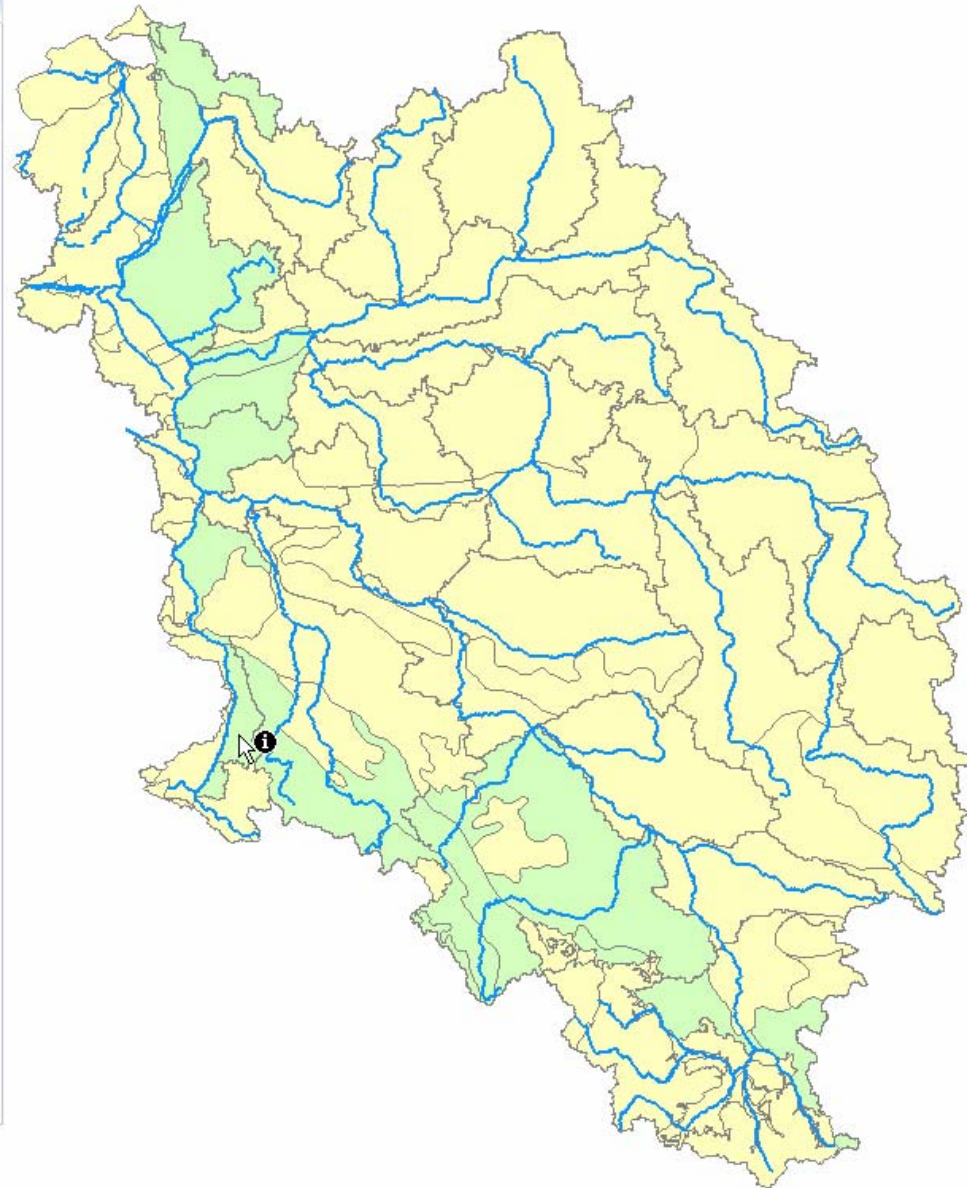
[-] GWB

[-] ZASOBY

[-] 1

Location: (225068.629003 374379.514760)

Field	Value
OBJECTID	1
EU_CD_GB	PL_GB_6400_088
ZASOBY_DYSPOZYCYJNE	127099
ZASOBY_EKSPLOATTACYJNE	0
POBOR_REJESTR	11937
POBOR_NIEREJESTR	<null>
POBOR_GORNICZY	3
POBOR_SASIAD_GWB	<null>
POBOR_CALKOW	<null>
STOPIEN_WYK_ZASOB	9
STAN_ZASOB	115159
WZGLED_REZERWA_ZAS	0.906
OCENA	bardzo wysoki
UWAGI	



Groundwater Monitoring

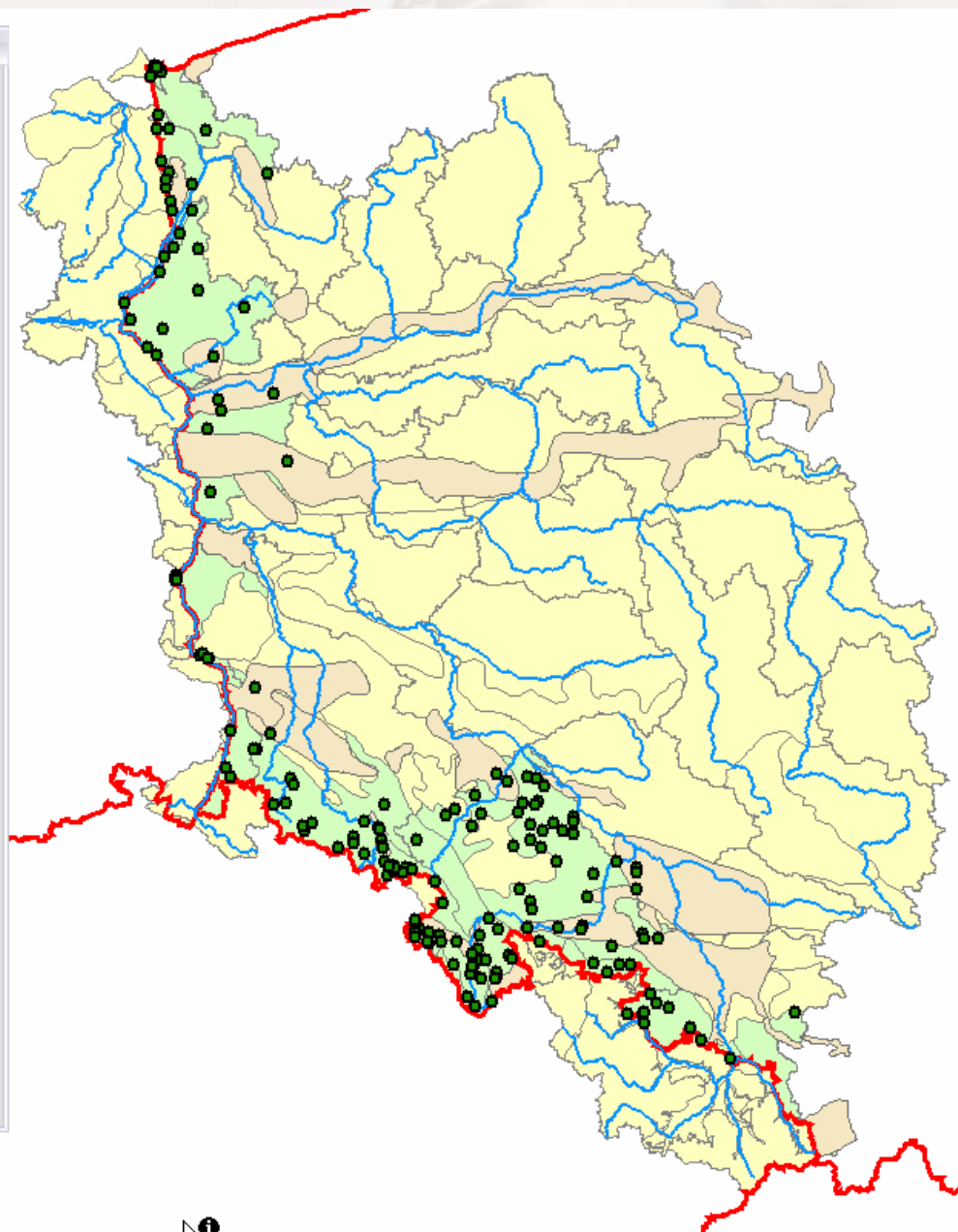
Identify Results

Layers: <Top-most layer>

PUNKTY_MONITORINGOWE Location: (234189.049359 398232.921846)

- GZWP_TB
 - 61
 - TYP_OTWORU_TB
 - TYP_OŚRODKA_TB
 - LITOLOGIA_TB
 - REGION_HYDRO_TB
 - RODZAJ_OTWORU_T
 - RODZAJ_WODY_TB
 - RZGW_TB
 - STRATYGRAFIA_TB
 - UŻYTKOWANIE_TB

Field	Value
OBJECTID	61
ID	60
GZWP_ID	315
NAZWA	Zbiornik Chocianów-Gozdnicza Qsk
WIEK	Q
STATUS	1



SUMMARY

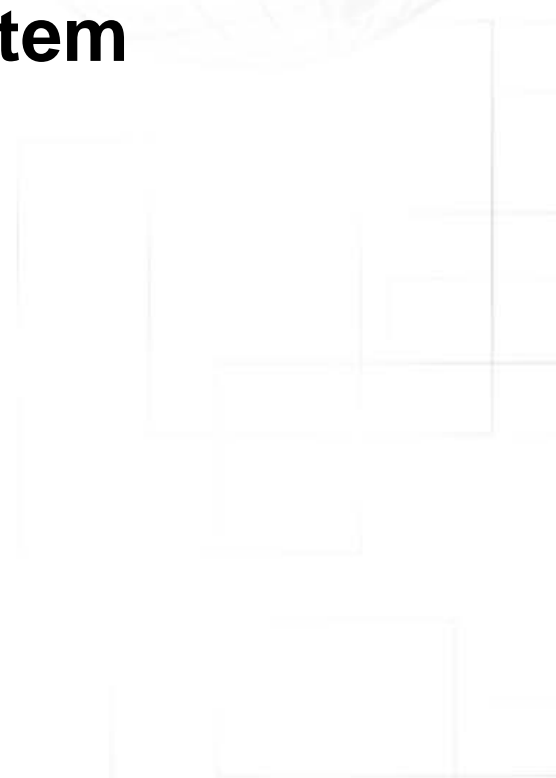
Co-operation in transboundary areas

Integrated water management system

International projects

Reference monitoring points

We have to work together !





DANKE

Tomasz Nałęcz, Polish Hydrogeological Survey

Tomasz.Nalecz@pgi.gov.pl