



Groundwater Common Implementation Strategy for the WFD – Current status and prospects

Johannes Grath

Outline of the presentation

- Common implementation strategy – GW related activities in the past
- Blueprint to safeguard EU Waters – GW related issues
- Common implementation strategy – new structure for 2013–2015
- Elements of next mandate for WG Groundwater
- Way forward – next steps

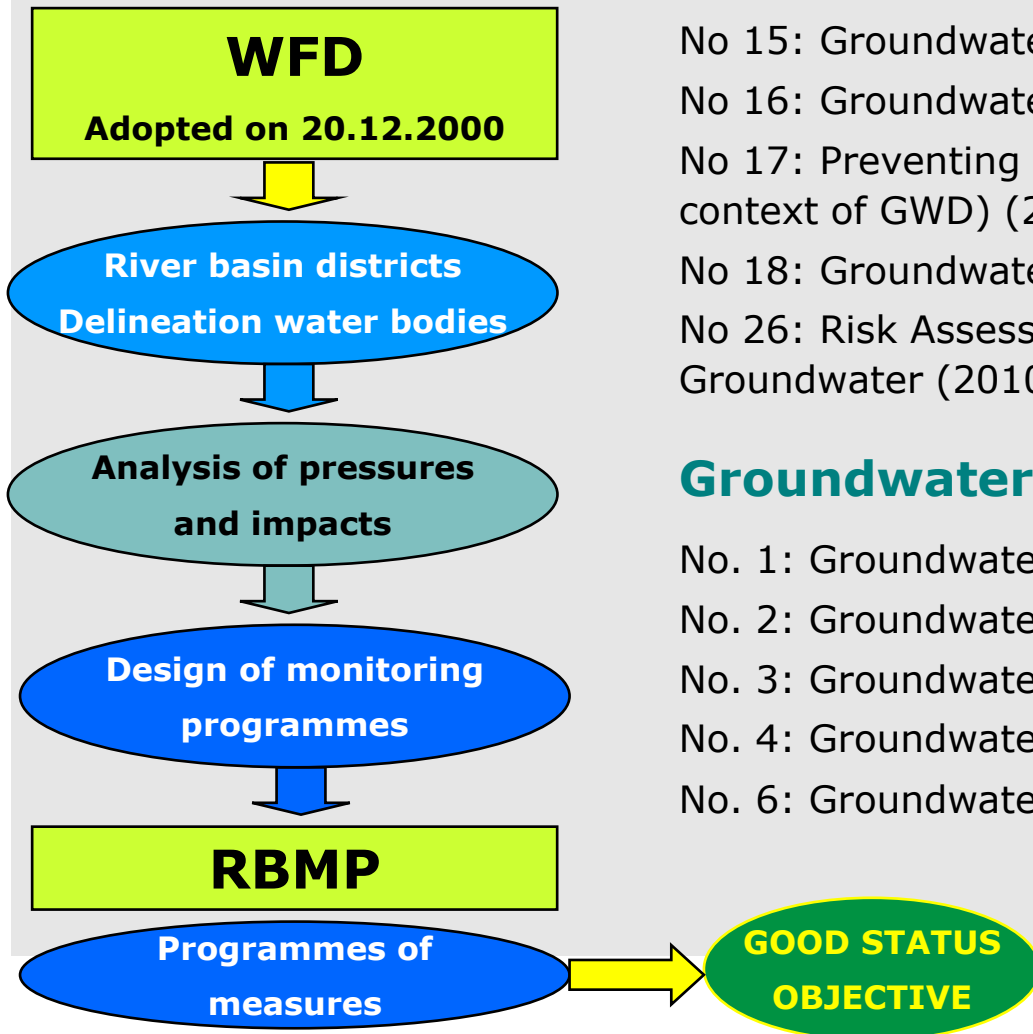


Groundwater CIS Guidance

- No 02: Identification of Water Bodies (2003)
- No 15: Groundwater Monitoring (2007)
- No 16: Groundwater in Drinking Water Protected Areas (2007)
- No 17: Preventing or Limiting Direct and Indirect Inputs (in context of GWD) (2007)
- No 18: Groundwater Status and Trend Assessment (2009)
- No 26: Risk Assessment and the Use of Conceptual Models for Groundwater (2010)

Groundwater Techn. Reports

- No. 1: Groundwater trends (2001)
- No. 2: Groundwater characterisation (2004)
- No. 3: Groundwater monitoring (2004)
- No. 4: Groundwater risk assessment (2004)
- No. 6: Groundwater Dependent Terrestrial Ecosystems (2012)



Blueprint to safeguard EU Waters

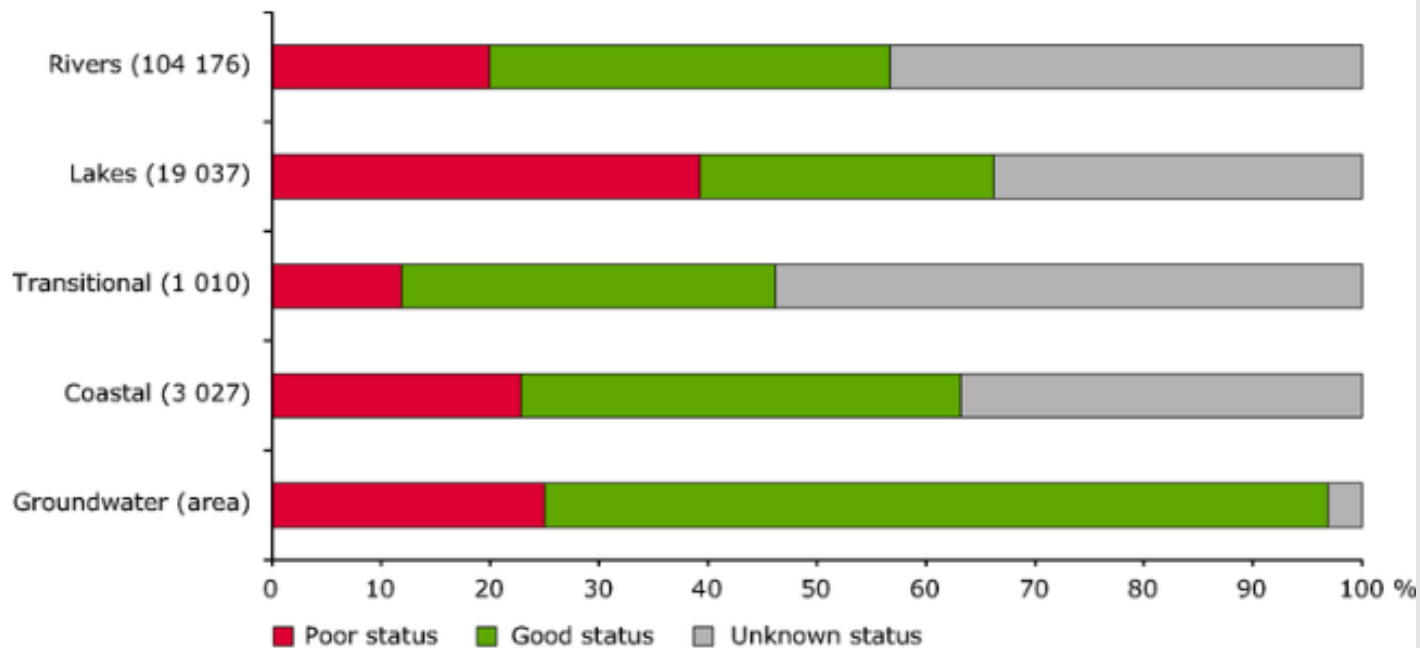
The Blueprint's policy recommendations are based on the results of the following assessments.

1. Analysis of the WFD's **river basin management plans**:
 - giving information on how Member States have improved their water management.
2. Review of the 2007 policy on **water scarcity and drought**:
 - including water efficiency measures.
3. The evolution of water resources:
 - **water's vulnerability to climate change** and man-made pressures such as urbanisation and land use.
4. Outcome of the **fitness check of EU freshwater policy**:
 - a gap analysis to identify any uncovered areas and assess the adequacy of the current framework.



Blueprint – selected results

Distribution of chemical status of groundwater, rivers, lakes, transitional and coastal waters.



Blueprint – selected results

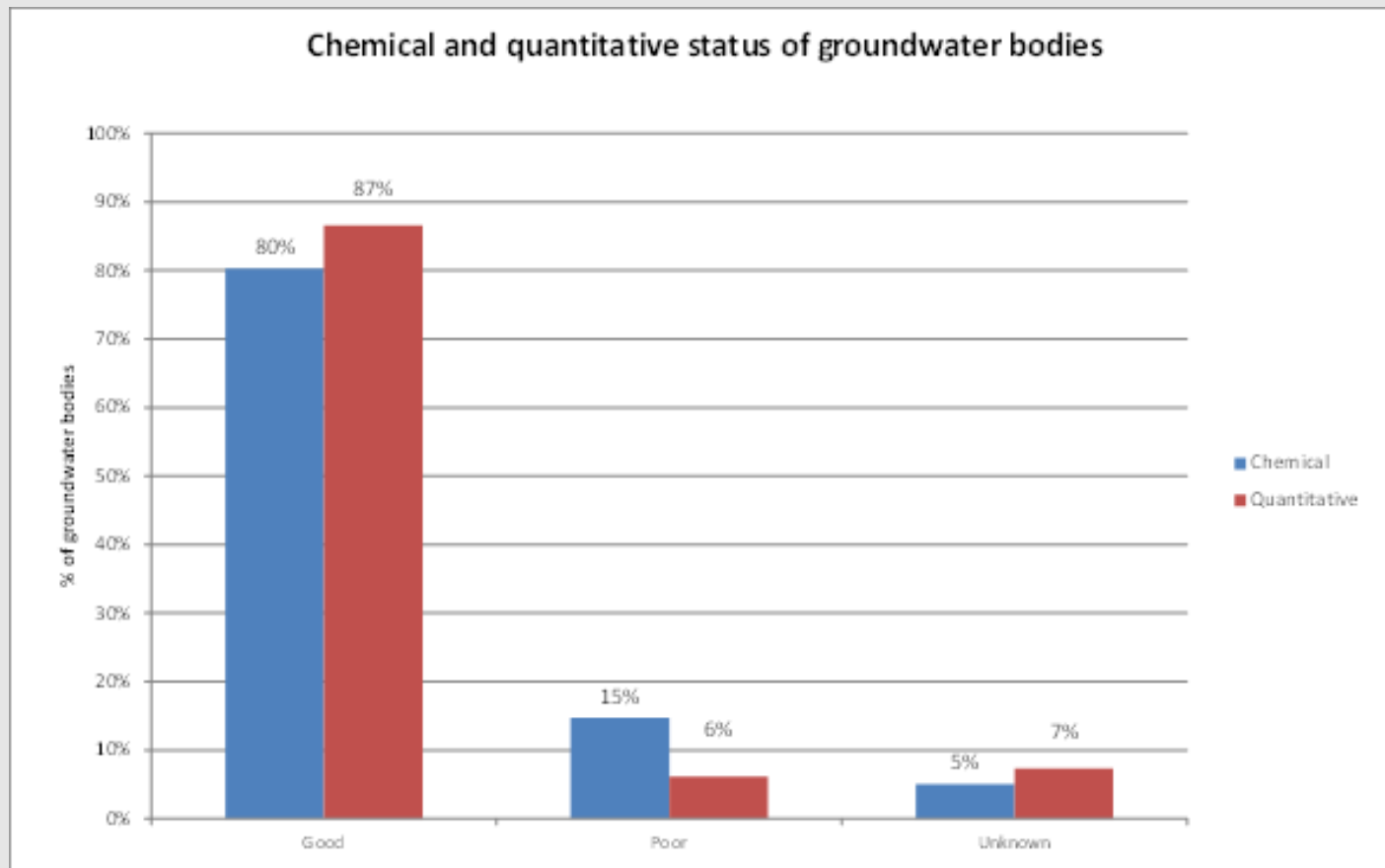
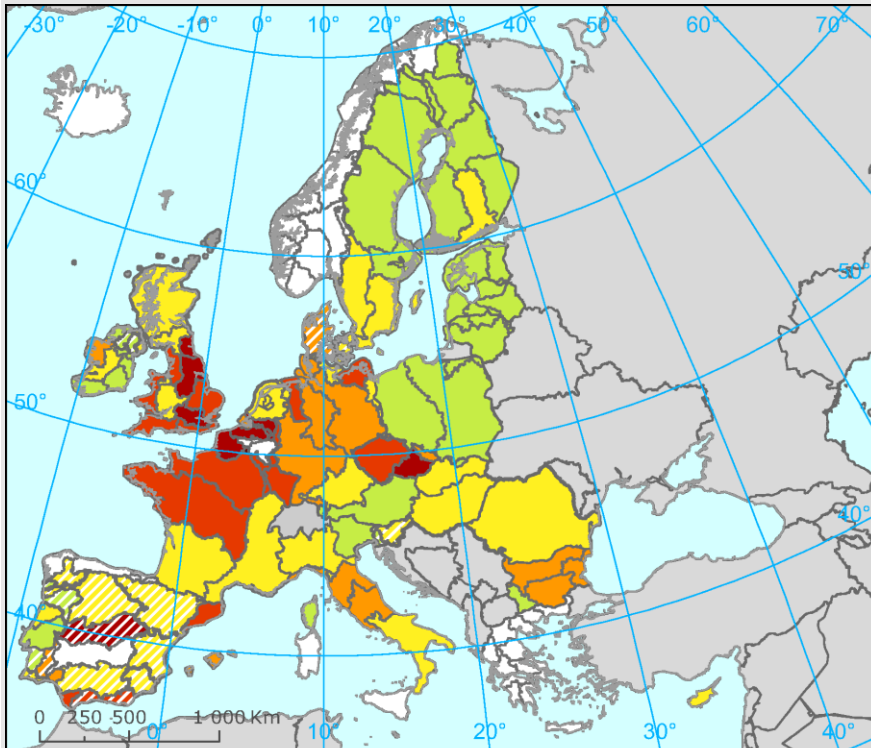
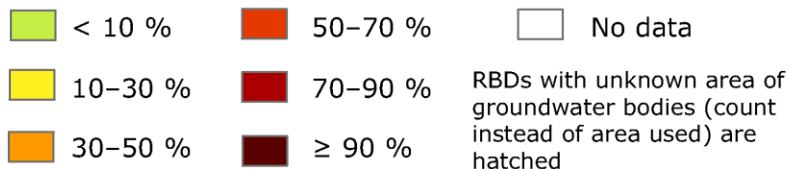


Figure 8.8.1: Percentage of GWBs achieving good, poor or unknown chemical and quantitative status
Source: WISE

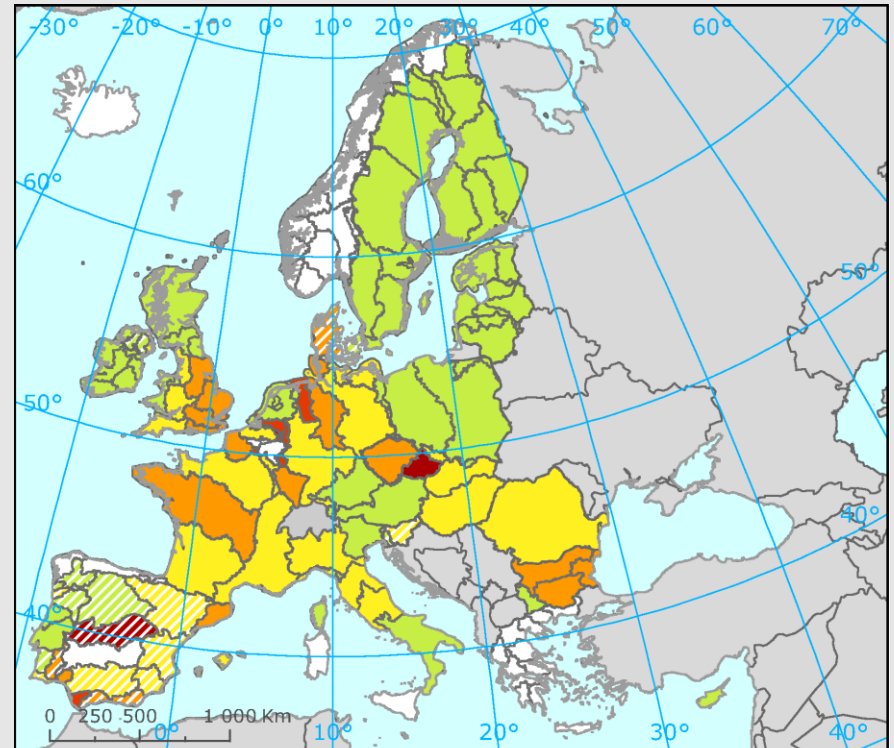
Percentage of GWB area per RBD not achieving good chemical status



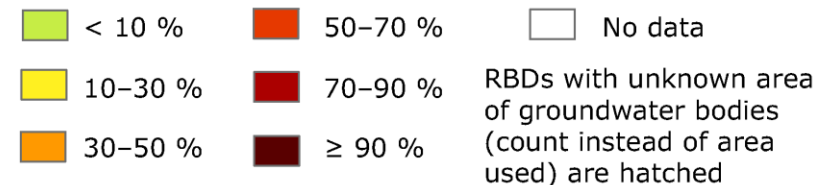
Percent of classified groundwater bodies with poor chemical status



Percentage of GWB area per RBD not achieving good chemical status due to nitrates

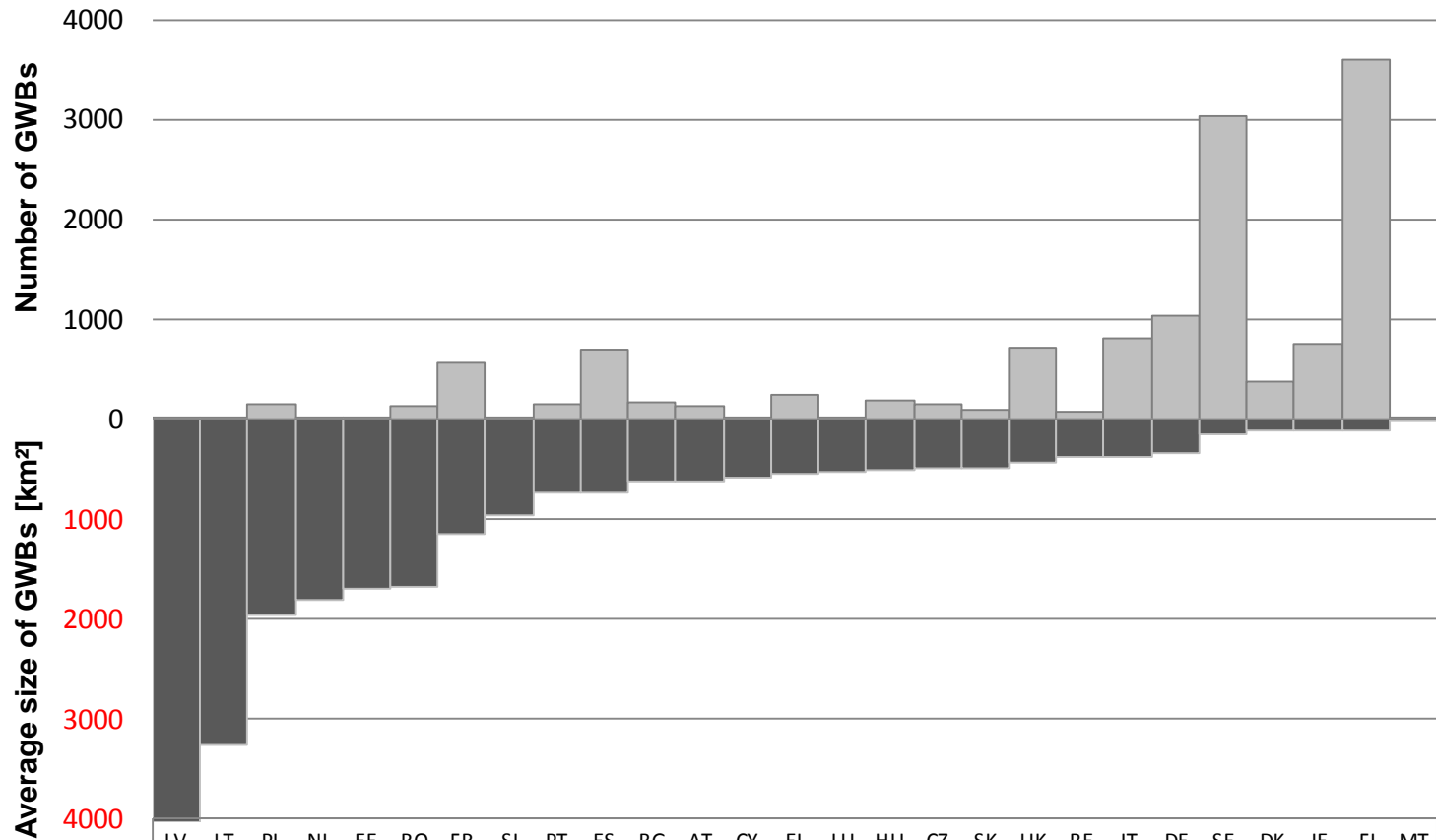


Percent of classified groundwater bodies with poor chemical status due to nitrates



GW-Bodies in Europe

Total number and average size of GWBs in EU 27



	LV	LT	PL	NL	EE	RO	FR	SI	PT	ES	BG	AT	CY	EL	LU	HU	CZ	SK	UK	BE	IT	DE	SE	DK	IE	FI	MT
■ Number of GWB	16	20	160	23	26	142	560	21	149	699	178	136	19	241	5	185	161	101	716	80	814	1036	3031	383	757	3608	16
■ km2/GWB	4037	3265	1955	1817	1687	1679	1148	965	735	725	624	617	580	548	517	503	490	485	441	384	374	346	150	113	111	103	25

I. Blueprint recommendation (GW)

Groundwater dependent ecosystems and Groundwater associated surface water bodies

- MS should share and exchange experience gathered so far regarding:
 - interconnections between groundwater and the ecosystems
 - the needs of the ecosystems

- Knowledge gaps - to be filled with appropriate studies to inform the RBMP process



II. Blueprint recommendation (GW)

Threshold values

- Methodologies transparent and better harmonised among Member States

Drinking water protected areas

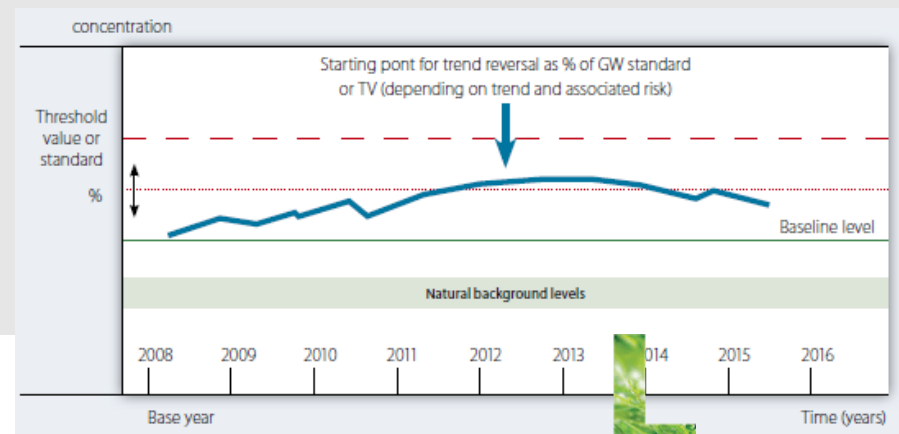
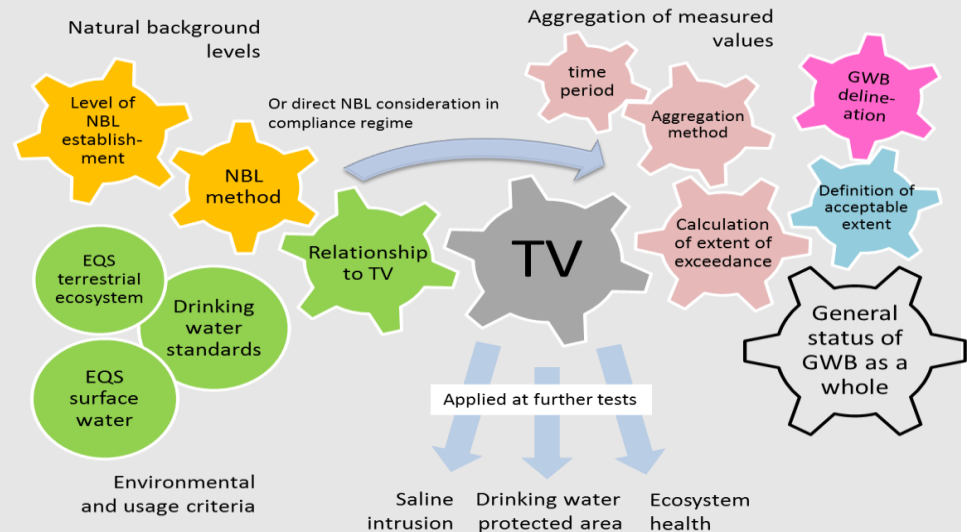
- information on the status should be included in the RBMPs

Trend assessments

- should be completed in the second RBMP cycle

Trend reversal assessment

- should be implemented as far as data series allow



III. Blueprint recommendation (GW)

Improve datasets on water quantity, water availability and demand trend projections

- to be able to develop **coherent** and **effective sets of measures**

Water pricing policies

- Ensure the transparency and fairness and base them on **metering**



Balance between recharge and abstraction of groundwater

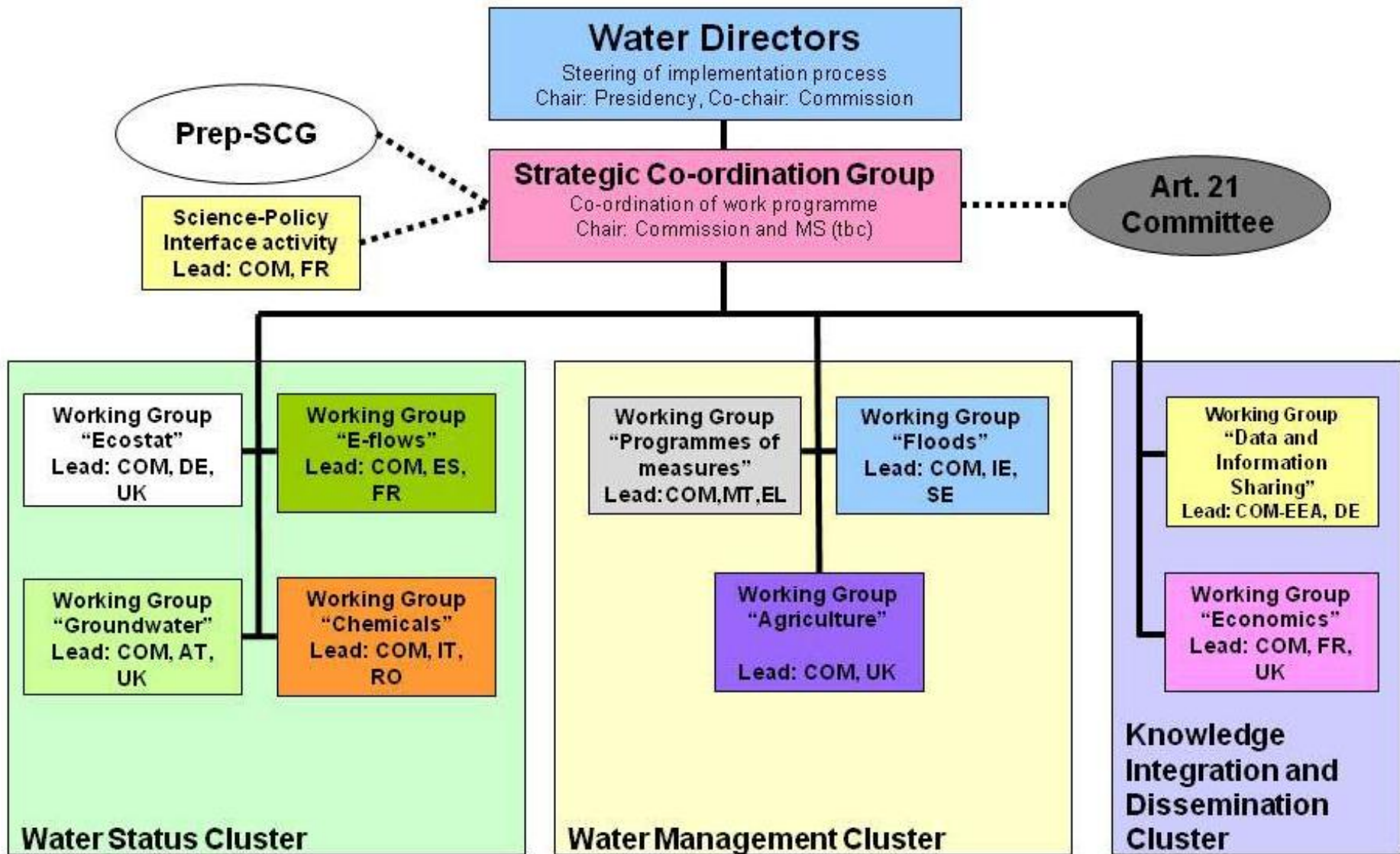
- **Methodologies** for calculation should be **transparent** and **better harmonised** between Member States. **Ecological flow** should be **considered**.

Delineation and reporting of groundwater bodies

- Should be better harmonised
- Reasons for different approaches should be clarified and related guidance documents should be improved, if necessary



CIS Organisation 2013-2015



WG Groundwater Mandate Period 2013–2015

Main Tasks

- i. Continuous consultation on the review of GWD Annexes I and II.
- ii. Groundwater (GW) -dependent ecosystems – to continue discussion of GW dependent terrestrial ecosystems and to start discussion of GW-dependent aquatic ecosystems – elaboration of recommendations
- iii. Drinking water – better integration in River Basin Planning and Management. Risk assessment in the catchment area (contributing to water safety plans), monitoring and data access/exchange in collaboration with Drinking Water Committee.



WG Groundwater Mandate Period 2013–2015

Other Tasks

- iv. Groundwater threshold values derivation – approaches and criteria under particular consideration of relevant receptors;
- v. Information exchange on MS trend assessment and reversal methodologies
- vi. Exchange of information related to groundwater use, groundwater availability and groundwater abstraction, e-flows (considering water scarcity and droughts), metering, water efficiency, water pricing etc.
- vii. Proposal on future reporting of delineation & assignment of GW-bodies to horizons

Interlinkages with other WGs: Ecological Status, Chemical, Agriculture



Way forward – next steps

- GWD Annex I & II review
 - Public consultation – Online questionnaire (until 2013, 22nd Oct)
<http://ec.europa.eu/yourvoice/ipm/forms/dispatch?form=GWDdirective>
 - Conference in Brussels: 2013, 9th October
http://bunch.arcadisbelgium.be/groundwater_conference_2013/
 - Registration until: 2013, 27th September



Contact & Information

Johannes Grath

Johannes.grath@umweltbundesamt.at

Umweltbundesamt
www.umweltbundesamt.at

Groundwater Systems in Europe
Berlin ■ 22 August 2013

